

# Quality Report

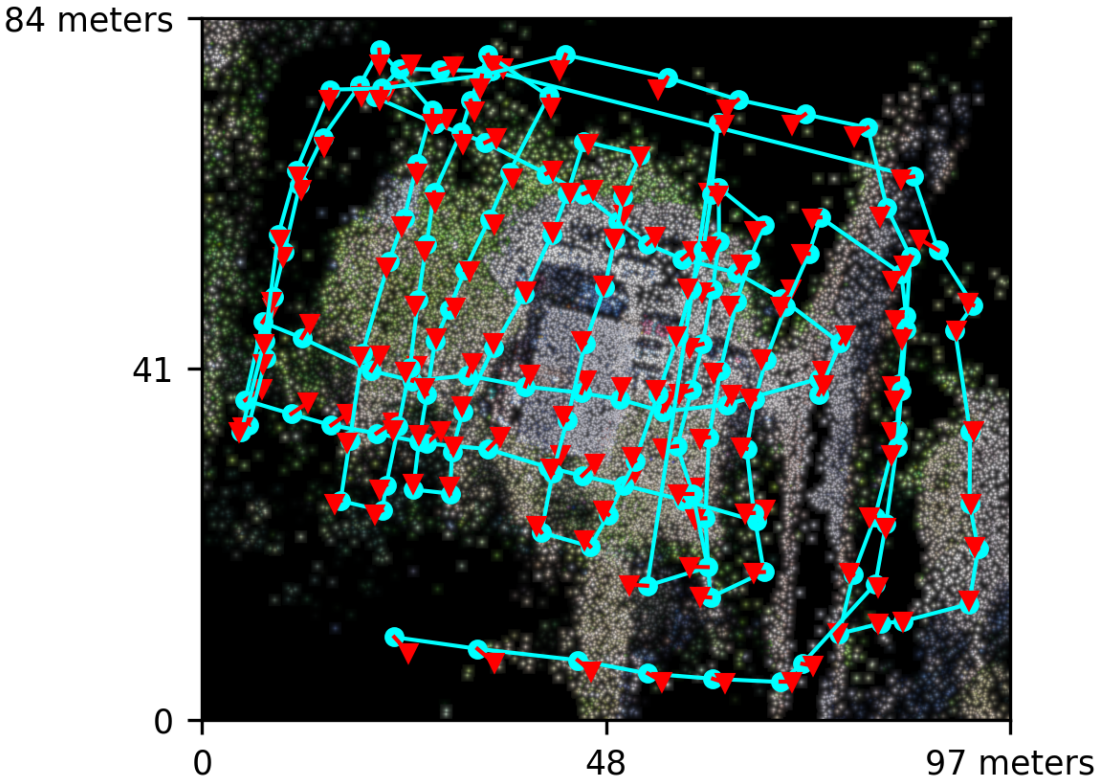
Processed with ODX version 3.7.4

## Dataset Summary

Date	09/06/2026 at 13:12:34
Area Covered	0.006678 km <sup>2</sup>
Processing Time	1.0h:43.0m:33.0s
Capture Start	07/06/2026 at 13:18:48
Capture End	07/06/2026 at 13:56:58

## Processing Summary

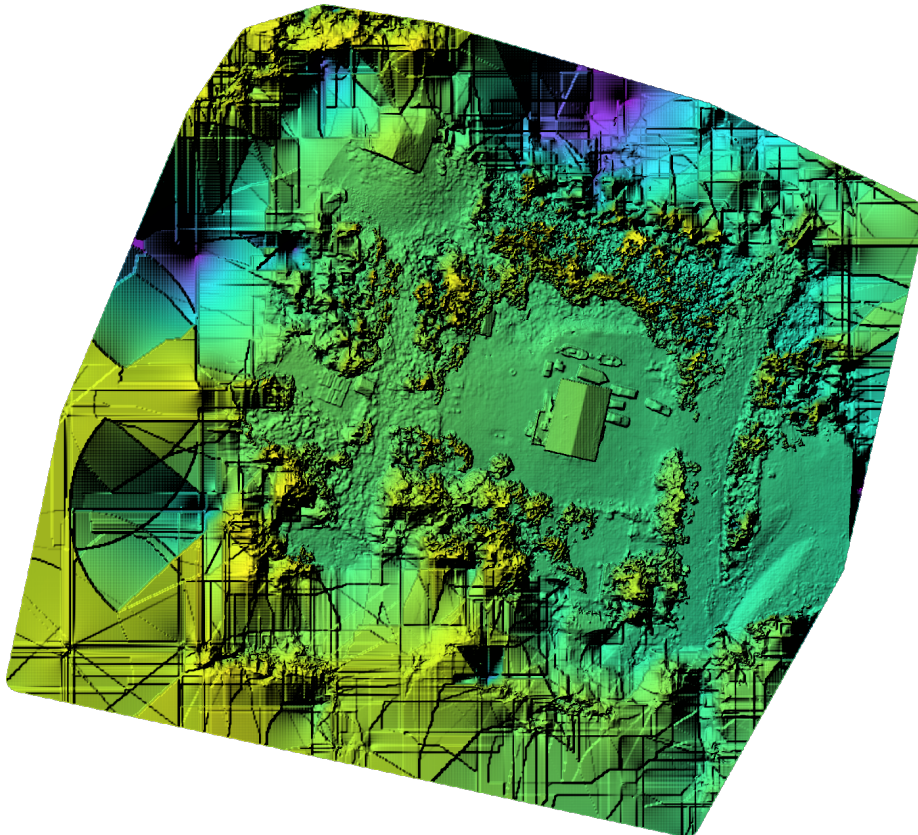
Reconstructed Images	163 over 171 shots (95.3%)
Reconstructed Points (Sparse)	72241 over 74056 points (97.5%)
Reconstructed Points (Dense)	14,502,617 points
Average Ground Sampling Distance (GSD)	0.6 cm
Detected Features	10,000 features
Reconstructed Features	2,090 features
Geographic Reference	GPS
GPS errors	8.02 meters



# Previews



Orthophoto



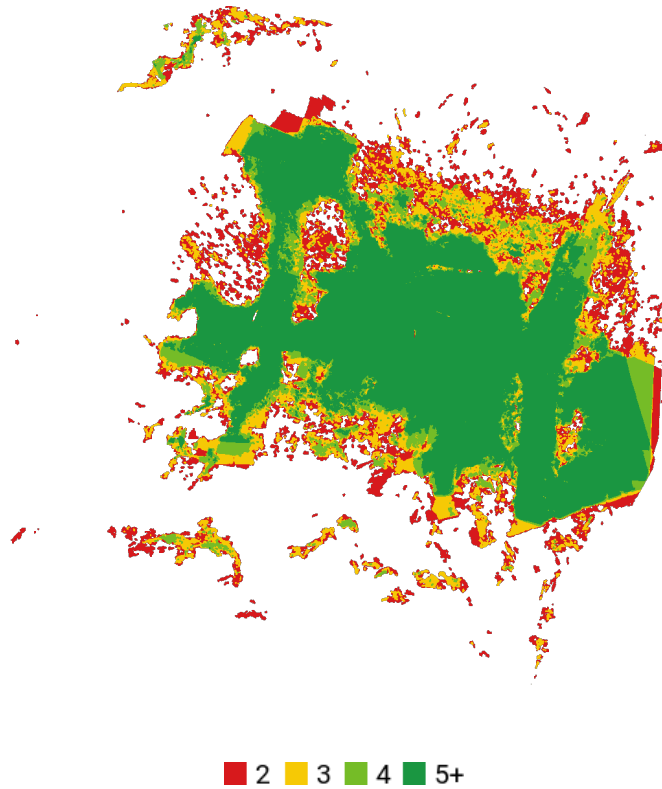
Digital Surface Model



287.58m

375.56m

## Survey Data



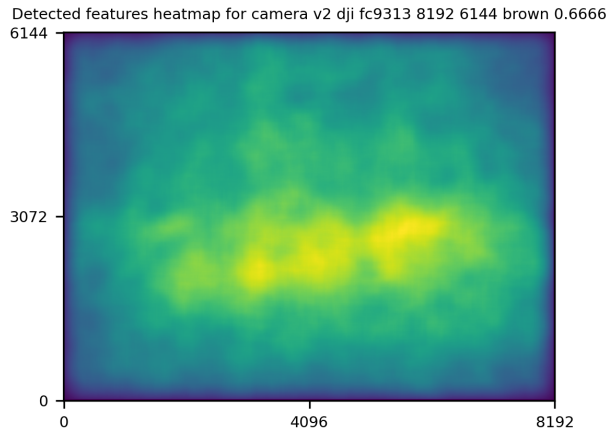
## GPS/GCP/3D Details

GPS	Mean	Standard Deviation	RMS Error
X Error (meters)	-0.008	0.950	0.950
Y Error (meters)	-0.023	0.874	0.874
Z Error (meters)	-0.020	8.625	8.625
Total			8.016

3D	Mean	Standard Deviation	RMS Error
X Error (meters)	0.034	0.089	0.095
Y Error (meters)	0.031	0.082	0.088
Z Error (meters)	0.073	0.118	0.139
Total			0.097

	Absolute	Relative
Horizontal Accuracy CE90 (meters)	2.050	0.105
Vertical Accuracy LE90 (meters)	13.584	0.188

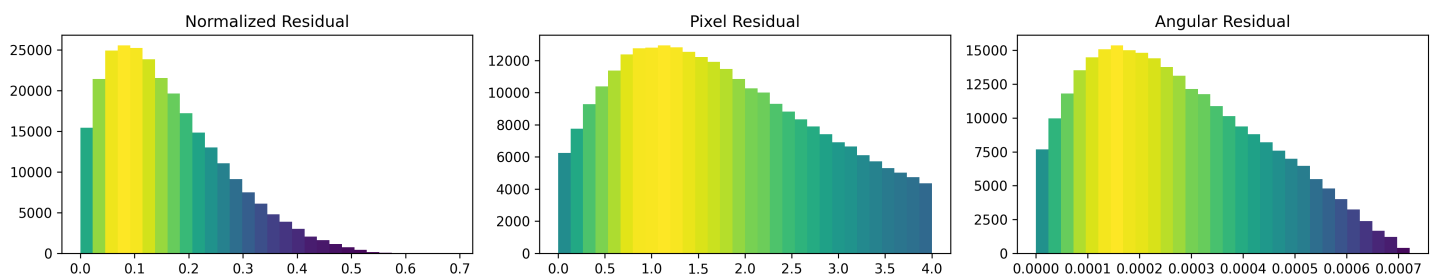
# Features Details



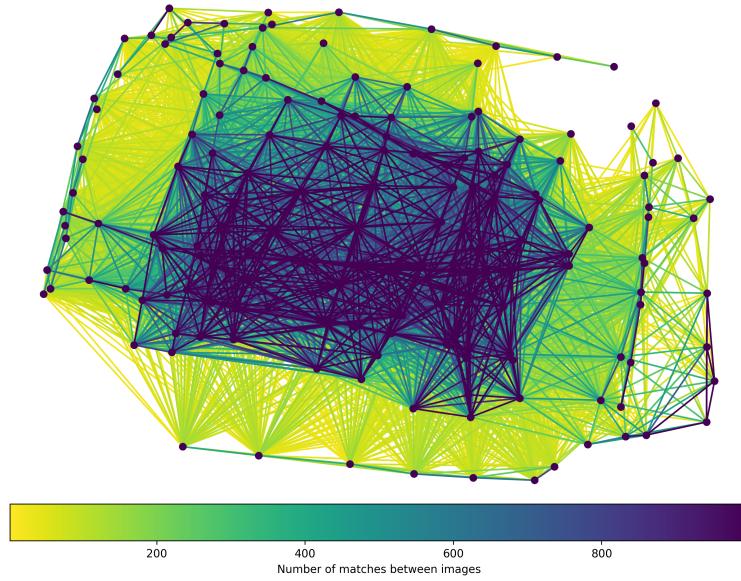
	Min.	Max.	Mean	Median
Detected	10000	10000	10000	10000
Reconstructed	169	5867	2201	2090

# Reconstruction Details

Average Reprojection Error (normalized / pixels / angular)	0.16 / 1.76 / 0.00027
Average Track Length	4.97 images
Average Track Length (> 2)	7.73 images



# Tracks Details



Length	2	3	4	5	6	7	8	9	10
Count	34837	12513	6294	3871	2571	1788	1441	1109	890

# Camera Models Details

**v2 dji fc9313 8192 6144 brown 0.6666**

	k1	k2	k3	p1	p2	focal	aspect	cx	cy
Initial	0.0000	0.0000	0.0000	0.0000	0.0000	0.6667	1.0000	0.0000	0.0000
Optimized	0.0769	-0.1477	0.0977	0.0001	-0.0005	0.6758	1.0000	-0.0021	0.0007

